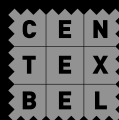


ecolution fabric range organi



OEKO-TEX®
CONFIDENCE IN TEXTILES

Organi

Fabric group Organi is a luxuriously woven and sustainable fabric made from post-consumer wool, recycled polyamide and (new) linen. Durable, luxurious and suitable for almost any upholstery.

What makes this textile sustainable is the recycled wool and polyamide, the wool is post-consumer.

The production is environmentally friendly and gives previously used woolen products a second life. It is woven by one of our trusted partners, an Italian textile craftsman who has built up his expertise for over a century and is widely known for this highly specialized process.

The yarns are carded from regenerated wool products. Carding is a special way of processing the yarns, resulting in a yarn and ultimately a furniture fabric such as Organi. It distinguishes itself from other virgin wool yarns and qualities.

During use, a certain amount of damage may occur, this has no influence on the durability of Organi, it is a depth of such wool qualities. This production makes each batch unique and color deviations may occur.

Due to its composition, Organi complies with the BS5852 cigarettes (part 0) & match (part 1) test and also with the EN1021 cigarettes (part 1) & match (part 2) test.

Organi has a mixed aspect and is available from stock in a wide and trendy color line.



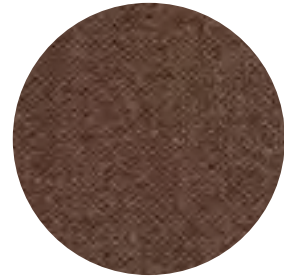
fabric range organi



almond 82



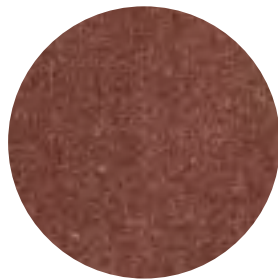
beige 05



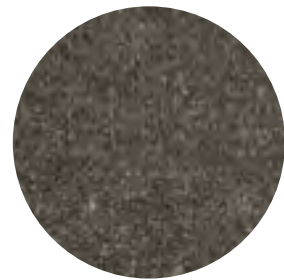
burgundy 34



camel 09



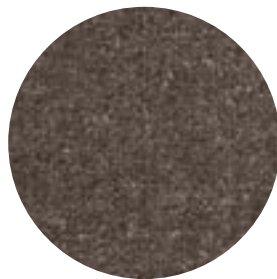
carmine 36



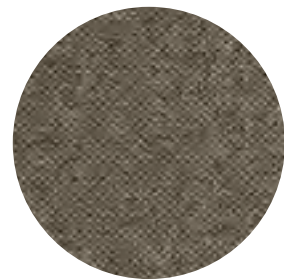
chocolate 17



clay 84



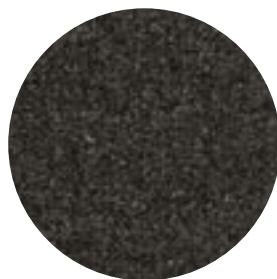
darkbrown 18



darkgrey 68



espresso 123

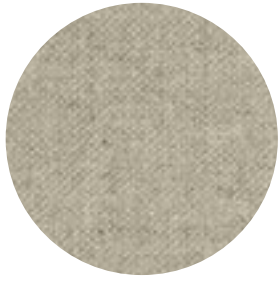


graphite 66

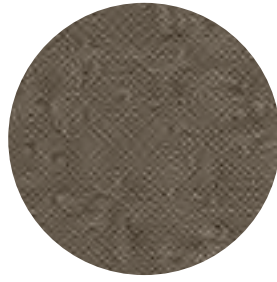


hunter 156

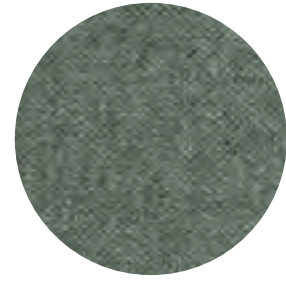
fabric range organi



lightgrey 60



liver 10



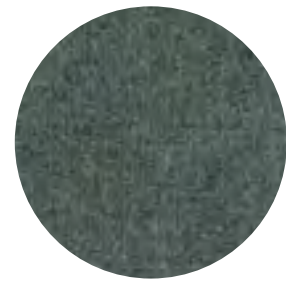
mint 50



mocca 13



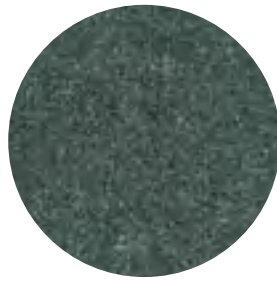
mustard 06



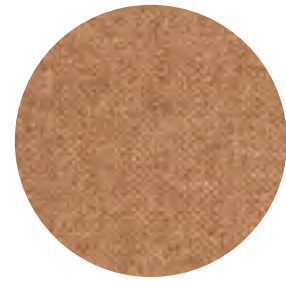
niagara 158



pistachio 52



royal blue 47



rust 29



shitake 124



tabacco 111

Organi - article passport



Article with a woolly look and full grip.

Available from stock in a wide range of contemporary and commercial colours.

Productkenmerken

Productgroup	flatweave
Applications	sofas, pods, chairs with tight and loose upholstery
Composition faceside	50%RWO 30%LI 20%PA
Composition backside	n/a
Bonding / Coating	n/a
Statistic code	51119098
Dyeing method	yarn dyed
Available colours	23
Packaging	transparent plastic

Durability specifications

Test	Test specification	Executed by laboratory	Unit	Testresult		Norm RAL GZ 430/4:2019-01		Norm DIN EN 14 485:2006-09
				Dry	Wet	DGM	DGM+	
Abrasion resistance - yarn breakage	DIN EN ISO 12947-1:2007-04 DIN EN ISO 12947-2:2017-03	CTL	cycled	>100.000		min. 12.000	min. 16.000	A
Pilling	DIN EN ISO 12945-2:2000-11. 2000 cycles	CTL	grade	3-4		min. 3-4	min. 4	C
Colour fastness to light	DIN EN ISO 105-B02:2014-11. Process 3, exposure level 5							
	light colours	CTL	grade	4		min. 4	min. 5	C
	middle colours	CTL	grade	4-5		min. 4	min. 5	B-C
Colour fastness to rubbing	DIN EN ISO 105-X12:2016-11							
	light colours	CTL	grade	5	4-5	dry: 4, wet: 3	dry:> 4, wet: 3-4	A/A
	middle colours	CTL	grade	5	4-5	dry: 4, wet: 3	dry:> 4, wet: 3-4	A/A
Ignitability (cigarette test)	BS 5852 part 1 (1979) from The Gurniture and Furnising (Fire) (Safety) regulations: 1988 No. 1324. Schedule 4 part 1 Ignition source 0: cigarette							
		DIN EN ISO 1021-2:2014. Source: smouldering cigarette	Centexbel	passed				
Ignitability (match test)	BS 5852 part 1 (1979) from The Gurniture and Furnising (Fire) (Safety) regulations: 1988 No. 1324. Schedule 4 part 1 Ignition source 1: match flame equivalent							
		DIN EN ISO 1021-2:2014. Source: match flame equivalent	Centexbel	passed				

Processing specifications

Minimum workable width in centimeters	± 148
Roll length in meters	± 40
Material weight in grams per linear meter	± 550

Test	Test specification	Executed by laboratory	Unit	Testresult		Norm RAL GZ 430/4:2019-01		Norm DIN EN 14 485:2006-09
				Warp	Weft	DGM	DGM+	
Tensile strength	DIN EN ISO 13934-1:2013-08	CTL	Newton	436	544	min. 350	min. 400	B/B
Tear growth resistance	DIN EN ISO 13937-3:2000-06	CTL	Newton	35,5	34,4	min. 25	min.30	B/B
Resistance to seam slippage	DIN EN ISO 13936-2:2004-07 Load 180 N	CTL	mm	3,0	3,0	max. 5	max. 4	A/A
Delamination	DIN 53530:1981-02	CTL	Newton	n/a	n/a	n/a	n/a	n/a
Chemical substances	REACH	Centexbel	passed					

Cleaning specifications

Test	Test specification	Executed by laboratory	Unit	Testresult		Norm RAL GZ 430/4:2019-01		Norm DIN EN 14 485:2006-09
				Warp	Weft	DGM	DGM+	
Dimensional change for washing 30 degrees celsius / air drying	DIN EN ISO 5077:2008-04, DIN EN ISO 6330:2013-02, DIN EN ISO 3759:2011-08	CTL	%	n/a	n/a	n/a	n/a	n/a

