

Meeting Pod L

PRODUCT SPECIFICATION SHEET



ABOUT THE MEETING POD L

MODULAR DESIGN MADE WITH SUSTAINABLE MATERIALS, MANUFACTURED
LOCALLY FOR A CIRCULAR ECONOMY

The MEETING POD L offers various integration possibilities for its side and back panels. It provides options for a tabletop that can be mounted high to accommodate a stool or set at a lower position for task chairs. This tabletop can be seamlessly incorporated, in either standing or seated height, allowing for both dynamic discussions or extended meetings involving four to six individuals. For collaborative work, a Bridge Table can be mounted at either a high or low position, providing two workstations adjacent to each other.

The backside of the MEETING POD L can either offer an Upholstered Mid-Panel or a Glass Mid-Panel. The Glass Mid-Panel creates a transparent view, and helps form a glass back wall, consisting of three windows with layered glass, fashioning an open and inviting atmosphere without any closed panels. With the Upholstered Mid-Panel, a long meeting table could be incorporated to host a meeting at a high table with bar chairs, a low table with chairs, or a low table paired with custom sofas.

The MEETING POD L effortlessly blends into any existing or new space and arrives fully equipped with a motion sensor-driven fresh air ventilation (4 ventilators) and an automated LED lighting system. Several power grommets (featuring 110V, USB A+C or HDMI ports) are available for integration.

Offering ample space for small group meetings of 4 to 6 people, it can also be configured for a single user seeking concentration at a desk or participating in a video call using the mounted monitor. Recognizing that different activities demand distinct interiors, customize your pod with modular options like shelving, table tops, monitors, whiteboards, or sofas.

Design by Ecolution.

TABLE OF CONTENTS

Technical Data	page 3
Pod Dimensions	page 4
Interior Options	page 4
Accessories	page 5
Electrical Component Options	page 6
Acoustic Performance Data	page 7
Fabrics	page 8 - 13
Finishes	page 14
Pod Collection	page 15

TECHNICAL DATA

MEETING POD L



Users

2 - 4 people max



Weight

Pod with Glass Mid-Panel: 1,585 lbs
Pod with Upholstered Mid-Panel: 1,605 lbs



Installation

4 hours, including unboxing on-site and clean up
Two installers required
Tools required, see Installation Manual for details



Outside Dimensions

Depth: 88.6"
Width: 89.8"
Height: 92"



Power:

Main supply: 125V, 60Hz, 15A
Cable connection: Plug Type B (Grounded)
Stand-by consumption: 2.1W
Total LED lights consumption (2x): 3.8W (4.18 kWh/1,000h)
Total ventilator consumption (4x): 4.32W
Infrared motion sensor time delay: 5 min. 20 sec.



Lighting Unit:

Total power usage: 4W
Input: 12V
Total lumen output: 300 lumen
Color temperature: 3,000K
LED bulbs lifespan: 30,000 hours
Fitting: DC12V constant voltage class 2 power unit



Ventilation Unit:

Power usage: 1.08W (4x)
Input: 12V
Airflow rate when occupied: 183 m3/h
DB/ventilator during occupancy: .3 Sone / 22.5db
Ventilators switch off automatically after 5 minutes without detected motion



Packaging

Knockdown wooden crate
Dimensions: 96"D x 48"W x 54"H
Material: Economy and resawn wood
Total boxes amount (excluding accessories): 1
Credit for each box when returned



Interior & Exterior Options

Exterior: Magnetic Whiteboard, Monitor Panel, and Shelf (low/high position)
Interior: Magnetic Whiteboard, Meeting Table*, Monitor Panel, Shelf*, Side Table*, and Sofas
(* = has low/high positions)



Fabrics and Finishes

Exterior: Fabric or felt upholstery with laminated acoustic wood panels
Interior: Fabric or felt upholstery with laminated acoustic wood panels

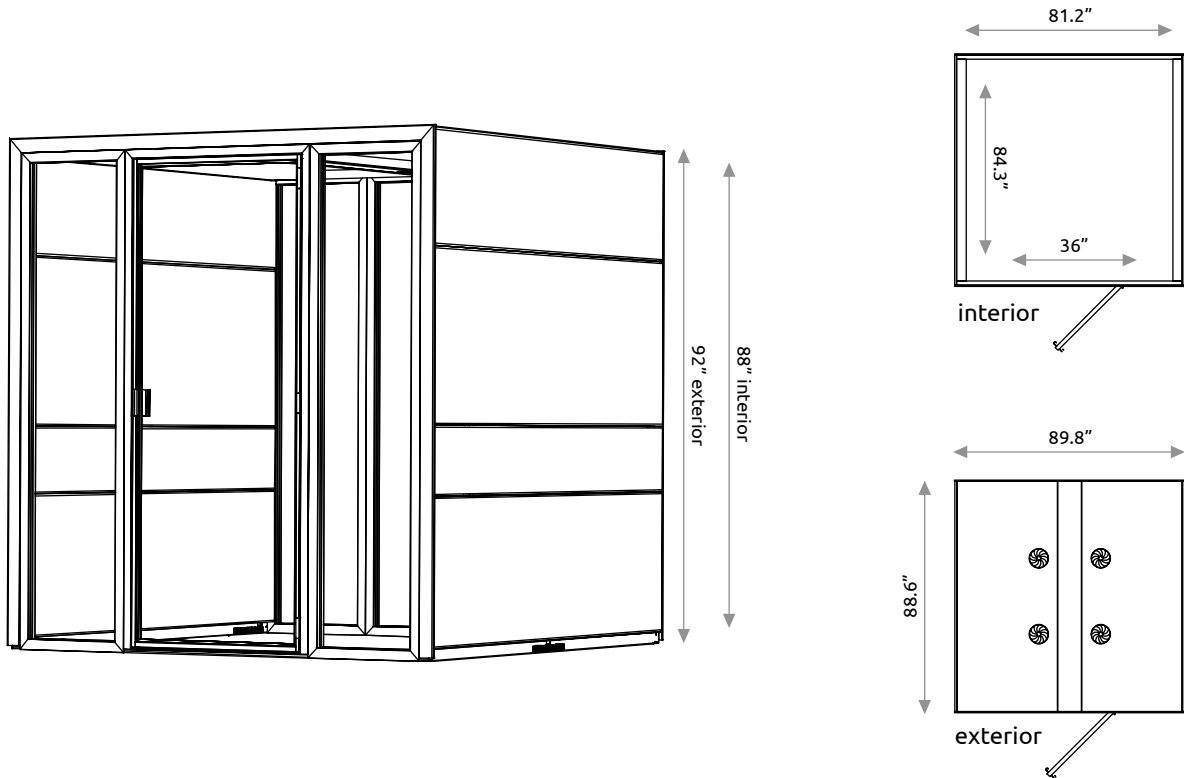


Materials

Particleboard Panels: 100% recycled wood
MDF Panels: Recycled paper and organic waste
Frame: Powder coated aluminum extrusion profiles and sheet metal
Acoustic Filling and Insulation: 100% recycled textiles
Safety Glass Panels: 0.2" + 0.2"
9 out of 12 upholstery options made of 100% recycled textiles
Windows and Doors: EPDM rubber u-profile
Door Frame: EPDM rubber soundblock profile

POD DIMENSIONS

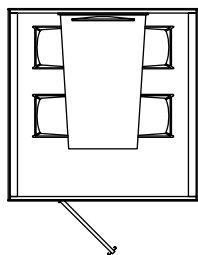
MEETING POD L



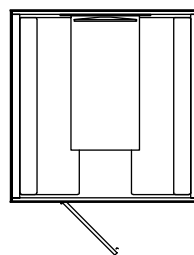
INTERIOR OPTIONS



MEETING POD L with Seating (avail. upon request) & Meeting Table in high position (41.3")
Table Top: 39.4"D x 62"W



MEETING POD L with Sofas & Meeting Table in low position (29.5")
Table Top: 31.5"D x 78.7"W
Sofa: 63"D x 26"W x 32.4"H



ACCESSORIES

MAGNETIC WHITE BOARD



Magnetic Whiteboard available on the inside/outside and left/right side of the pod

Dimensions: 44"W x 31"H

SHELF



Shelf available on the inside/outside and left/right side of the pod

High position: 41.3" from the floor
Low position: 29.5" from the floor
Dimensions: 9.9"D x 39.8"W

Available in different finishes (see pg.14)

MEETING TABLE



Meeting Table top with column leg

High position: 41.3" from the floor
Low position: 29.5" from the floor
Dimensions: 19.7"D x 31.5"W

Available in different finishes (see pg.14)

SIDE TABLE



Side Table available on the left/right side of the pod

High position: 41.3" from the floor
Low position: 29.5" from the floor
Dimensions: 19.7"D x 84"W

Available in different finishes (see pg.14)

MONITOR PANEL



Monitor Panel available on the inside/outside of the pod

Dimensions: 84"W x 31"H

SOFA



Sofa with removable covers

Dimensions: 26"D x 65"W x 32.4"H
Seating height: 18.11"H

Available in different fabrics (see pg.8-13)



ELECTRICAL COMPONENT OPTIONS

VENTILATION



Ventilation slots



Ventilators

Air input: Perforated floor plinths with internal acoustic labyrinth.
Air output: 4x ventilators integrated in roof
Airflow rate when occupied: 183 m3/h

LIGHTING



LED-Light



Sensor

LED-lights in ceiling: 2 x 3.8W = 7.6W
Total lumen output: 300 lumen
Color temperature: 3,000 K
Activation: Infrared motion detection integrated in ceiling
LED bulbs lifespan: 30,000 hours
Fitting: 58mm (2 5/16") drill hole
UL Listed certified

POWER CONNECTION

The pods can be connected from each side 2" above the floor or from the roof. Pods with a mid-panel located on the back have an extra option using a 2" diameter grommet placed 1.5" above the floor in the middle. The cable channel inside the wall is accessible and able to be guided up and down via the removable inside and outside panels.

Surge protector includes six outlets in a black impact-resistant housing. Delivers 15A of power with a lighted switch. Includes a 15 14/3' SJT Black cord with 6 NEMA 5-15R outlets, including one for bulky transformers, 790 AC Suppression Joule Rating, UL Listed certified.



Cable splitter
for connecting



15 amp surge protector
with 6 outlets

POWER GROMMET OPTIONS

STANDARD POWER GROMMET



- 120 volt RA
- Includes 10' cable
- 2" diameter face
- UL Listed certified

USB A & C POWER GROMMET



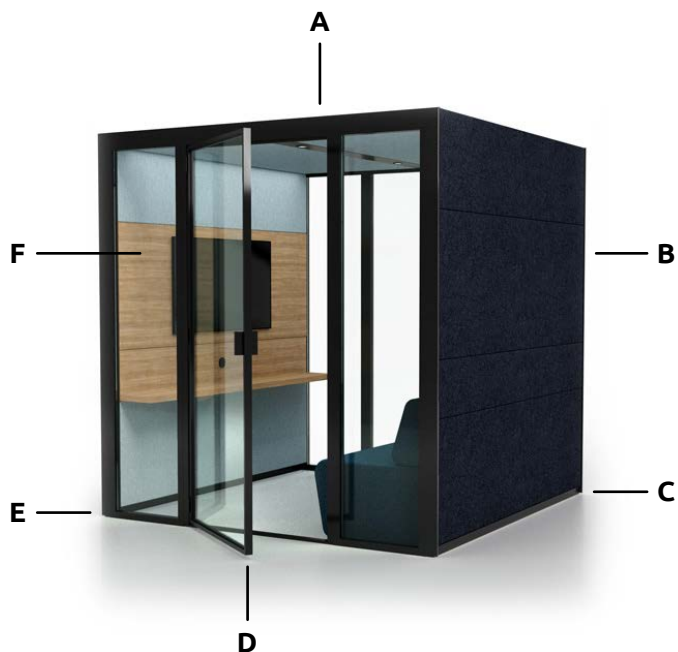
- 1 USB A & 1 USB C
- Includes 10' cable
- 2" diameter face
- UL Listed certified

HDMI DISPLAY GROMMET

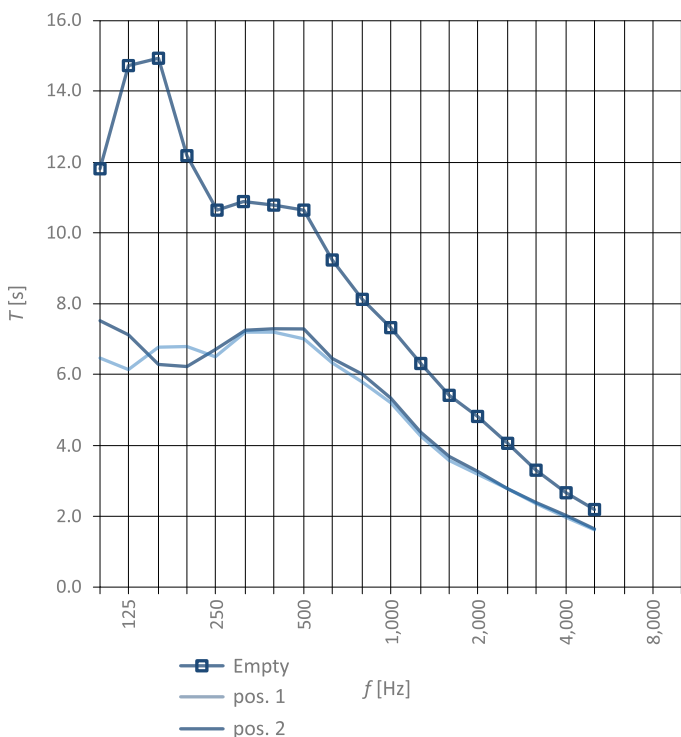


- 1 HDMI Display Port
- Includes 10' cable
- 2" diameter face
- UL Listed certified

ACOUSTIC PERFORMANCE DATA



- A** Gaps around the door closed with rubber profiles in the door frame.
- B** 4.3" thick sound absorbing panels on both sides and on the ceiling.
- C** Adhesive-backed open cell rubber foam sound absorber insulation within ventilation plinths.
- D** Automatic drop-seal integrated in the top and bottom of the door.
- E** Open cell sponge foam rubber or EPDM attached to the base of the pod.
- F** 0.4" thick double layered glass panels with an acoustic layer in between.



TESTING RESULTS

Speech level insertion loss $D_{s,A}$ is 30.1 dB (measured according to ISO 23351-1), Class category A for the Meeting Pod (which is an identical build with different dimensions). Test report available upon request.

FABRICS



Blazer CAMIRA

Composition:

- 100% Pure New Wool

Abrasion Resistance:

- Double Rubs Wyzenbeek (ASTM D4157)
(Heavy Duty Upholstery): 75,000

Flammability:

- California Technical Bulletin 117
- NFPA 260 + UFAC Class 1
- BS 7176 Low Hazard
- ASTM E84 Class 1 or A (Adhered/Un-adhered)
- IMO FTP Code (Part 8)
- NFPA 701 when FR treated



Woodcroft
CUZ2Z



Perth
CUZ4H



Norland
CUZ4J



Manchester
CUZ1V



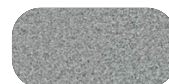
Edinburgh
CUZ1Y



Oxford
CUZ09



Silverdale
CUZ28



Surrey
CUZ1E



Aberlour
CUZ1J



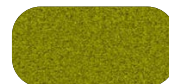
Silcoates
CUZ30



Bromsgrove
CUZ35



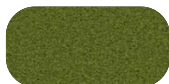
Bryanston
CUZ53



Ulster
CUZ1F



Kingham
CUZ3U



Camphill
CUZ1K



Lucton
CUZ3M



Wesley
CUZ82



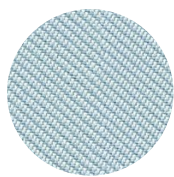
Tonbridge
CUZ3Q



Padworth
CUZ3N



Falmouth
CUZ4M



Oceanic CAMIRA

Composition:

- 100% Post Consumer Recycled Polyester
- 75% SEAQUAL® YARN

Abrasion Resistance:

- Double Rubs Wyzenbeek (ASTM D4157)
(Heavy Duty Upholstery): 100,000

Environmental:

- Non metallic dyestuffs

Flammability:

- California Technical Bulletin 117
- BS 7176 Low Hazard
- ASTM E84 Class 1 or A (Un-adhered)
- NFPA 701 when FR treated (Gorts)



Gulf
OOC15



Atoll
OOC06



Coast
OOC03



Sea
OOC04



Seafarer
OOC16



Bay
OOC08



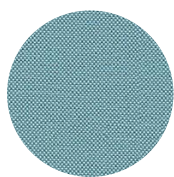
Aquatic
OOC12



Coral
OOC05



FABRICS



Quest CAMIRA

Composition:

- 100% Post Consumer Recycled Polyester
- 75% SEAQUAL® YARN

Abrasion Resistance:

- Double Rubs Wyzenbeek (ASTM D4157) (Heavy Duty Upholstery): 100,000

Environmental:

- Made from 100% post-consumer recycled polyester
- Non metallic dyestuffs

Flammability:

- California Technical Bulletin 117-2013
- NFPA 260 + UFAC Class 1
- BS 7176 Low Hazard
- ASTM E84 Class 1 or A (Adhered/Un-adhered)



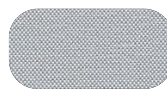
Tide
QUE12



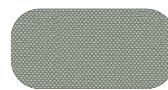
Wave
QUE11



Rock Pool
QUE10



Barnacle
QUE03



Shell
QUE06



Quartz
QUE05



Mussel
QUE04



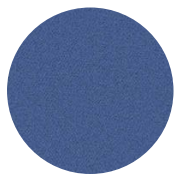
Urchin
QUE17



Sea Grass
QUE13



Algae
QUE14



Synergy CAMIRA

Composition:

- 95% Pure New Wool
- 5% Nylon

Abrasion Resistance:

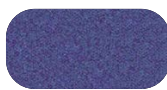
- Cycles Martindale (D4966) (Heavy Duty Upholstery): 100,000

Flammability:

- BS 7176 Low Hazard
- BS 7176 Medium Hazard when FR treated
- California Technical Bulletin 117-2013
- NFPA 260 + UFAC - Class 1
- ASTM E84 Class 1 or A (Adhered) when FR treated
- ASTM E84 Class 2 or B (Un-adhered) when FR treated
- NFPA 701 when FR treated
- IMO FTP Code (Part 8)



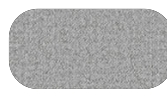
Guild
LDS63



Collaborate
LDS68



Huddle
LDS65



Serendipity
LDS08



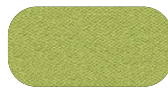
Venture
LDS05



Partner
LDS16



Mix
LDS17



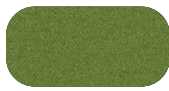
Gather
LDS46



Regard
LDS54



Pact
LDS53



Integrate
LDS47



Linea
LDS37



Tag
LDS33



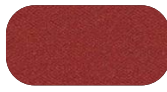
Lateral
LDS28



Congregate
LDS83



Likeness
LDS82



Share
LDS85



Affinity
LDS74



Fate
LDS07



Medley
LDS36



FABRICS



Aperture CF STINSON

Composition:

- 75% Post Consumer Recycled Polyester
- 25% Polyester

Abrasion Resistance:

- Break Strength ASTM D-5034: Warp: 325.0 lbs min, Fill: 275.0 lbs min
- Tear Strength ASTM D-2261: Warp: 48.0 lbs min, Fill: 53.0 lbs min
- Seam Slippage ASTM D-4034: Warp: 135.0 lbs min, Fill: 140.0 lbs min
- Colorfastness to Light AATCC-16: 40 Hours, Class 4.5
- Crocking AATCC-8: Dry: Class 4.0, Wet: Class 4.0

Environmental:

- No PFAS, fluorocarbons or perfluorinated compounds
- No added flame retardants
- No added antimicrobials

Flammability:

- ASTM E-84 (Unadhered): Class A or 1
- California Technical Bulletin 117-2013, Section 1: Passed
- NFPA 260: Class 1



Coastal
APT166



Alsace
APT71



Sargasso
APT76



Sterling
APT69



Heather
APT64



Sera
APT74



Density
APT78



Glasgow
APT72



Sage
APT77



Melon
APT62



Autumn
APT65



Matador
APT75



Binary CF STINSON

Composition:

- 100% Post Consumer Recycled Polyester

Abrasion Resistance:

- Break Strength ASTM D-5034: Warp: 315 lbs min, Fill: 167 lbs min
- Tear Strength ASTM D-2261: Warp: 37 lbs min, Fill: 46 lbs min
- Colorfastness to Light AATCC-16: 40 Hours, Class 4.0
- Crocking AATCC-8: Dry: Class 3.0, Wet: Class 3.0

Environmental:

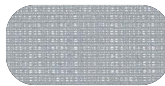
- No PFAS, fluorocarbons or perfluorinated compounds
- No added flame retardants
- No added antimicrobials

Flammability:

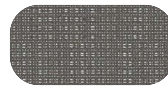
- ASTM E-84 (Unadhered): Class A or 1



Crystal
BIN50



Clarity
BIN52



Graphite
BIN57



Taupe
BIN53



Toasted
BIN58



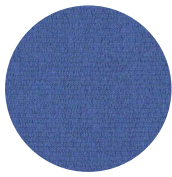
Black Ink
BIN56



LBC Red List
Free (4.0)



FABRICS



Intermix CF STINSON

Composition:

- 82% Post Consumer Recycled Polyester
- 18% Polyester

Abrasion Resistance:

- Break Strength ASTM D-5034: Warp: 340.0 lbs min, Fill: 311.0 lbs min
- Tear Strength ASTM D-2261: Warp: 33.2 lbs min, Fill: 31.1 lbs min
- Seam Slippage ASTM D-4034: Warp: 150.0 lbs min, Fill: 139.0 lbs min
- Colorfastness to Light AATCC-16: 40 Hours, Class 4.5
- Seam Slippage ASTM D-4034: Warp: 150.0 lbs min, Fill: 139.0 lbs min
- Crocking AATCC-8: Dry: Class 4.0, Wet: Class 4.0

Environmental:

- No PFAS, fluorocarbons or perfluorinated compounds
- No added flame retardants
- No added antimicrobials

Flammability:

- ASTM E-84 (Unadhered): Class A or 1
- California Technical Bulletin 117-2013, Section 1: Passed
- NFPA 260: Class 1



Sapphire
INX66



Cadmium
INX63



Granite
INX71



Cardamom
INX65



Marmalade
INX64



Rosso
INX68



Lulu CF STINSON

Composition:

- 100% Post Consumer Recycled Polyester

Abrasion Resistance:

- Break Strength ASTM D-5034: Warp: 152 lbs min, Fill: 193 lbs min
- Colorfastness to Light AATCC-16: 40 Hours, Class 5.0
- Crocking AATCC-8: Dry: Class 5.0, Wet: Class 5.0

Environmental:

- No PFAS, fluorocarbons or perfluorinated compounds
- No added flame retardants
- No added antimicrobials

Flammability:

- ASTM E-84 (Unadhered): Class A or 1



Horizon
LUL43



Cloud
LUL40



Oxygen
LUL42



Stone
LUL44



Sapphire
LUL45

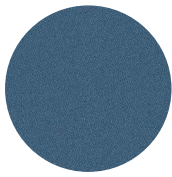


Moss
LUL41



**LBC Red List
Free (4.0)**

FABRICS



Swift CF STINSON

Composition:

- 100% Post Consumer Recycled Polyester

Abrasion Resistance:

- Tear Strength ASTM D-2261: Warp: 48 lbs min, Fill: 53 lbs min
- Seam Slippage ASTM D-4034: Warp: 65 lbs min, Fill: 72 lbs min
- Colorfastness to Light AATCC-16A: 40 Hours, Class 4.5
- Crocking AATCC-8: Dry: Class 4.0, Wet: Class 4.0

Environmental:

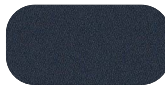
- No PFAS, fluorocarbons or perfluorinated compounds
- No added flame retardants
- No added antimicrobials

Flammability:

- California Technical Bulletin 117-2013, Section 1: Passed
- UFAC: Class 1
- NFPA 260: Class 1
- ASTM E-84 (Unadhered): Class A or 1



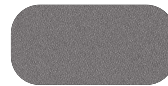
Skyway
SWF19



Deep Blue
SWF22



Fossil
SWF14



Gunmetal
SWF20



Breeze
SWF16



Tarragon
SWF21



Oat
SWF18



Blossom
SWF15



Tussah CF STINSON

Composition:

- 65% Post-Industrial Recycled Polyester
- 35% Post-Consumer Recycled Polyester

Abrasion Resistance:

- Break Strength ASTM D-5034: Warp: 195 lbs min, Fill: 120 lbs min
- Tear Strength ASTM D-2261: Warp: 16 lbs min, Fill: 18 lbs min
- Colorfastness to Light AATCC-16: 40 Hours, Class 4.0
- Crocking AATCC-8: Dry: Class 4.0, Wet: Class 3.0

Environmental:

- No PFAS, fluorocarbons or perfluorinated compounds
- No added flame retardants
- No added antimicrobials

Flammability:

- ASTM E-84 (Unadhered): Class A or 1
- California Technical Bulletin 117-2013, Section 1: Passed
- UFAC: Class 1



Glycerin
TUS70



Quartz
TUS73



Shale
TUS75



Incense
TUS76



Balsam
TUS72



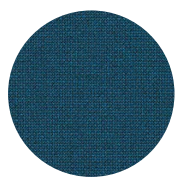
Resin
TUS74



LBC Red List
Free (4.0)



FABRICS



Renewed Loop GABRIEL

Composition:

- 100% post-consumer/post-industrial recycled polyester (contains 3-10% textile waste)

Abrasion Resistance:

- Rubs Martindale (EN ISO 12947-2): 100,000
- Double Rubs Wyzenbeek (ASTM D4157) (Heavy Duty Upholstery): 100,000

Environmental:

- No added flame retardants

Flammability:

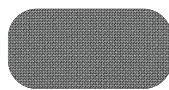
- BS EN 1021 1&2 Cigarette and Match
- DIN EN 13501-1 B-s1,d0(glued)
- CA TB 117-2013
- ASTM E 84 Class 1
- Will also pass other flammability standards
- Flame retardant performance is dependent upon the foam used



Colour 66259



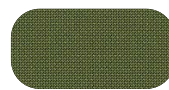
Colour 66258



Colour 60340



Colour 60339



Colour 66261



Colour 68283



Colour 64263



Colour 63133



Wool Felt I-DID

Composition:

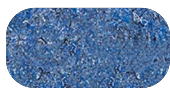
- 70% Wool recycled
- 25% PA recycled
- 5% OF

Abrasion Resistance:

- 100,000 Martindale

Flammability:

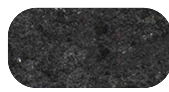
- EN 1021 1-2



KLM Sky Blue



Thunder Grey



Chalkboard Black



Defence Green

FINISHES

LAMINATED OUTSIDE PANELS



New Wave



Golden Light



Sheer Beauty



Ganache



Black

TABLE & SHELF FINISHES - 100% Recycled Material



Master Oak
Double Fumed



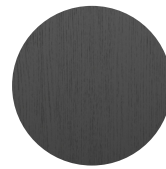
Master Oak
Light Natural



Master Oak
Natural



Master Oak
Brown



Elegant Black

POD COLLECTION



PHONE POD



FLEX POD



WORK POD



WORK POD L



WORK POD XL



WORK POD XXL



DUO POD



MEETING POD



MEETING POD L



MEETING POD XL



MEETING POD XXL