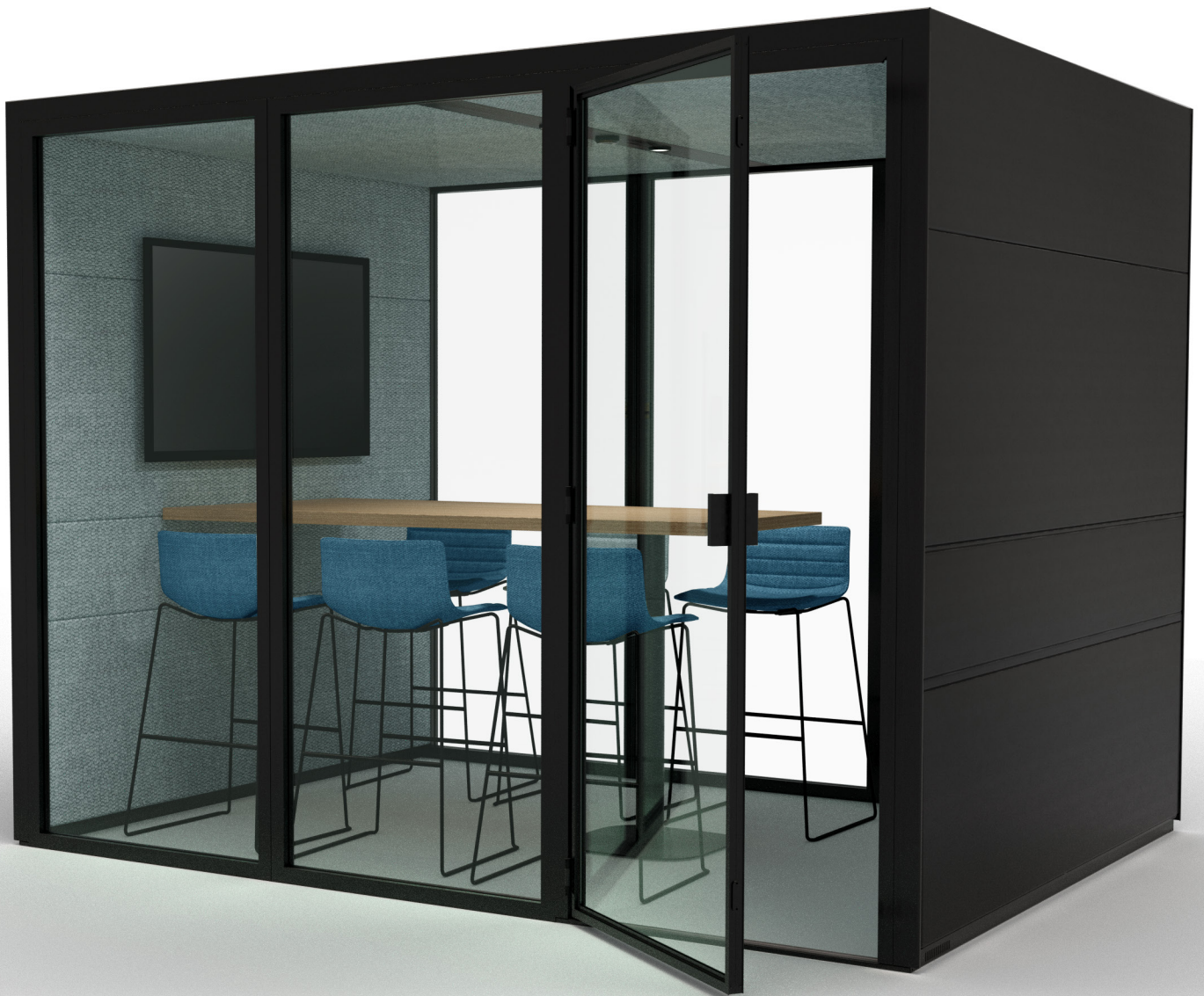


meeting pod xl

PRODUCT SPECIFICATION SHEET

This document contains technical information about the MEETING POD XL



MODULAR DESIGN MADE WITH SUSTAINABLE MATERIALS, MANUFACTURED LOCALLY FOR A CIRCULAR ECONOMY

In today's interconnected world, where the boundaries between our personal and professional lives are seamlessly merging and constant internet connectivity drives perpetual communication, maintaining privacy and tranquillity has become a crucial aspect of our daily routine an imperative design consideration in today's open and collaborative working and learning environments.

Introducing the MEETING POD XL, a noise-isolating oasis.

The MEETING POD LARGE offers various integration possibilities for its side- and back panels. It provides options for an integrated tabletop that can be elevated with stools for a or set at a lower position with visitor chairs for a grounded experience. Furthermore, on the rear side, a tabletop can be seamlessly incorporated, available in elevated configurations with five to eight stools for dynamic discussions or in a low position with visitor chairs on both sides, perfect for extended meetings involving five to eight individuals.

The MEETING POD XL effortlessly blends into any preexisting or new space, arriving fully equipped with a motion-sensor-driven fresh air ventilation system, an automated LED lighting system, a primary power connection (230V), and multiple integrated multifunctional power sockets. (Includes 2 wooden crates, 4 ventilators, accommodates 5-8 persons, different long meeting table option available).

Design by Ecolution

CONTENT

Technical data	page 3
Dimensions	page 4
Ventilation	page 5
Electricity & cable management	page 5
Interior & exterior furniture options	page 6
Fabrics & finishes	page 7-8
Acoustic performance data	page 9
Modular range	page 10

CERTIFICATIONS



TECHNICAL DATE

MEETING POD XL



Users

6 to maximum 8 people



Weight

With glass: 832 kg | 1835 lbs

With backpanel: 824 kg | 1835 lbs



Installation

6 hours, including unboxing at spot

Two installers required

Cordless screwdriver and leveler required



Outside dimensions

Depth: 2250 mm

Height: 2333 mm

With: 3032 mm



Power:

Mains supply: 230V AC 50-60Hz, max 16A

Cable connection: GST18

Stand-by consumption: 2,1 W

Consumption LED lights (2x) in total: 10 W

Consumption ventilator (2x) in total: 11,52 W

Infrared motion sensor time delay: 10 sec-7 min.



Lighting unit:

Power usage in total: 2x 5 W = 10 W

Input: 230V AC 50-60 Hz

Lumen output in total: 900 lumen

Color Temperature: 2700 K

Lifespan: +/- 15.000 hours

Fitting: GU10



Ventilation unit:

Power usage: 5,76W (4x)

Input: 12V DC

Airflow rate when occupied: 235 m3/h

Ventilators switched of automatically after

7 minutes without occupancy

DB per ventilator during occupancy: 5 dB(A)



Packaging

Knockdown wooden crate

Dimensions 2390mm / 800mm / 1750mm

Material planed Pine wood & MDF board

Required amount of boxes = 2

Credit for each box when returned

Optional sofa's and table tops packed separately



Interior & exterior options

Exterior: shelf (possible in high and low position), LCD-screen panel, magnetic whiteboard

Interior: side table, shelf, meeting table

(all possible in high and low position),

LCD-screen panel, magnetic whiteboard, sofa's



Fabrics and finishes

Interior: upholstered eco-fabric-, eco-felt- or laminated acoustic wood panels

Exterior: upholstered eco-fabric-, eco-felt- or laminated panels



Materials

Panels made of 100% recycled wood and panels made of recycled paper and organic waste

Frame made of powder coated RAL9005 aluminum extrusion profiles and sheet metal

Acoustic filling made of 100% recycled jeans

Safety glass panels 5 mm + 5 mm / 0.2 in + 0.2 in

Insulation material made of 100% recycled textile

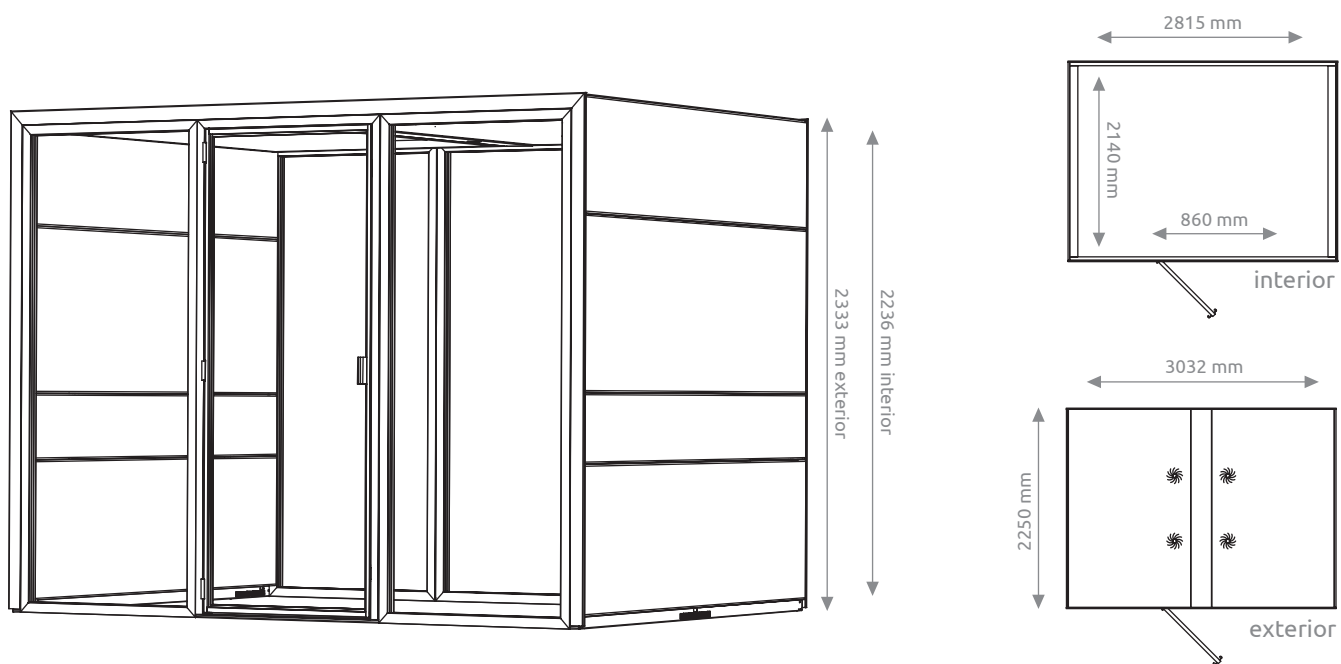
Upholstery made of 50% - 100% recycled textile

EPDM rubber u-profile for windows and door

EPDM rubber soundblock profile for door frame

DIMENSIONS

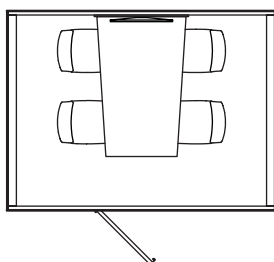
MEETING POD XL



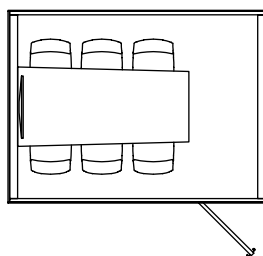
INTERIOR OPTIONS



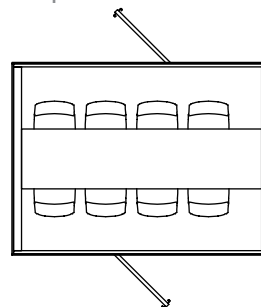
MEETING POD XL with stools and low table.
Table top 1000/800mm x 1570mm



MEETING POD XL with stools and high table.
Table top 925/825mm x 2000mm



MEETING POD XL with stools and high table.
Table top 700mm x 2815mm



VENTILATION



ventilation slots



ventilators

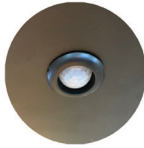
Input fresh air: Perforated floor plinths with internal acoustic labyrinth.
Output air: 2x ventilators integrated in roof.

Airflow rate when occupied: 235 m³/h

LIGHTING



LED-Light



sensor

Directional LED-lights integrated in ceiling: 2x 5 W = 10 W
Lumen output in total: 900 lumen
Color Temperature: 2700 K
Activation: By infrared motion detection integrated in ceiling
Lifespan LED bulbs: +/- 15.000 hours
Fitting: GU10

POWER CONNECTION

The pods can be connected to the network of building from each side of the pod 5cm above the floor or from the roof if preferable. Pods with a mid-panel integrated at the back have an extra option using a 60mm diameter grommet placed 3cm above the floor in the middle. Because the panels at the outside and inside of the pod can be removed, a cable channel inside the wall is accessible and cables can be guided in any direction.

All pods will be delivered with a GST18 power block with four gangs and two five meter GST18 cables to connect the pod with power sockets to the building.



power cables
with GST18 plug



cable splitter
for connecting



GST18 power block
integrated in ceiling tray

INTEGRATED POWERSOCKET OPTIONS



POWER SOCKET STANDARD

- 230 volt RA
- including 200mm cable GST18
- 68mm diameter



UTP Cat6 2x

- Two UTP ports included
- No cables included for ports at the backside
- 68mm diameter



USB SPEED CHARGING

- 2x USB port include
- including 200mm cable GST18
- 68mm diameter



Cat6 UTP + 1x HDMI

- 1x UTP Cat6 port included
- 1x HDMI port included
- 68mm diameter

OPTIONAL

SOFA



Sofa with removable covers
1650mm x 665mm x 824mm
Seating height 460mm

Available in different eco-fabrics.

MEETING TABLE



Table top with column leg (RAL9005).
In high position (1050mm) or low position (750mm)
800/1000mm x 1570mm, 40mm thick.

Available in different colours, dimensions and positions.

SIDE TABLE



Side table in the wall at the left- or right side of the pod.
In high position (1050mm) from floor or low position (750 mm).
Dimensions 500mm x 2140mm

Available in different colours.

SHELF



Shelf integrated in the wall at the left- or right side of the pod.
In high position (1050mm) from floor or low position (750 mm).
Dimensions 250mm x 2140mm

Available in different colours.

LCD-SCREEN PANEL



LCD-screen panel, available for inside or
integrated at the outside of the pods.
Dimensions 2140mm x 780mm

MAGNETIC WHITE BOARD



Magnetic whiteboard available for inside
or integrated at the outside of the pods.
Dimensions 2140mm x 780mm



FABRICS

ECO-FABRIC SOTO



42% LESS ENERGY



52% LESS WATER



46% LESS CO2



60% WASTE MATERIAL

Price category 1, in various colors
Composition: 100% recycled PET (plastic bottles waste)
Weight: 600 g/m2 | 17.64 oz/yd2
Abrasion resistance: 100.000 Martindale
Flammability: EN 1021 1-2

ECO-FABRIC REBO



59% LESS ENERGY



74% LESS WATER



35% LESS CO2



96% WASTE MATERIAL

Price category 1, in various colors
Composition: 96% recycled PET, 4% NY
Weight: 590 g/m2 | 17.36 oz/yd2
Abrasion resistance: 90.000 Martindale
Flammability: BS 5852

ECO-FABRIC WOOLY



82% LESS ENERGY



31% LESS WATER



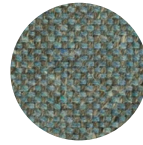
92% LESS CO2



70% WASTE MATERIAL

Price category 2, in various colors
Composition: 70% Wool recycled / 25% PA recycled / 5% OF
Weight: 600 g/m2 | 17.64 oz/yd2
Abrasion resistance: 100.000 Martindale
Flammability: EN 1021 1-2

ECO-FABRIC ORGANI



64% LESS ENERGY



22% LESS WATER



89% LESS CO2



50% WASTE MATERIAL

Price category 2, in various colors
Composition: 50% Wool recycled / 20% PA recycled / 30% LI
Weight: 550 g/m2 | 16.23 oz/yd2
Abrasion resistance: 100.000 Martindale
Flammability: BS 5852-part 1 / EN 1021 1-2

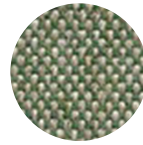
ECO-FABRIC BLAZER



100% BIO DEGRADABLE

Price category 4, in various colors
Composition: 100% Virgin Wool
Weight: 460 g/m2 | 13.55 oz/yd2
Abrasion resistance: 50.000 Martindale
Flammability: EN 1021 1-2

ECO-FABRIC MAIN LINE FLAX



100% BIO DEGRADABLE

Price category 3, in various colors
Composition: 70% Virgin Wool, 30% flax
Weight: 437 g/m2 | 12.88 oz/yd2
Abrasion resistance: 50.000 Martindale
Flammability: EN 1021 1-2

ECO-FELT



14% LESS ENERGY



98% LESS WATER



89% LESS CO2



98% WASTE MATERIAL

Price category 2, in various colors
Composition: 100% recycled textile from different origin.
Weight: 450 g/m2 | 13.29 oz/yd2
Abrasion resistance: the felt is not suitable for upholstery of seats
Flammability: EN 1101 1-2 standard.

FINISHES

LAMINATED PANELS OUTSIDE



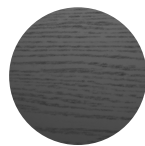
light oak



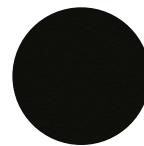
natural oak



fumed oak



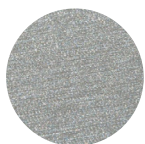
black oak



black mat



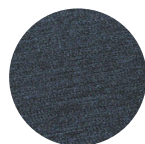
brushed gold



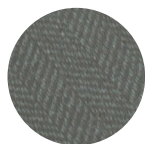
brushed aluminum



brushed bronze



brushed metal blue



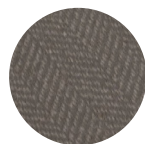
moss grey



slate grey



wool beige



brown weave

LAMINATED WOODGRAIN ECO PANELS INSIDE



light oak



natural oak



fumed oak



black oak

TABLE & SHELF FINISHES RECYCLED



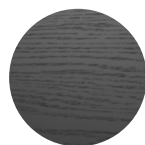
light oak



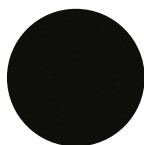
natural oak



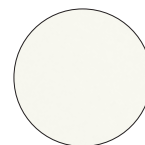
fumed oak



black oak



black mat

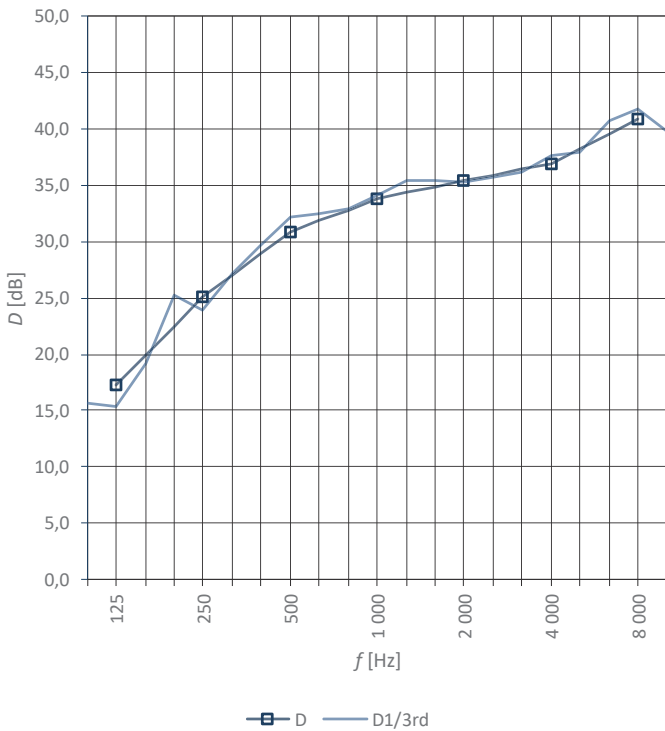


white

ACOUSTICS



- A** automatic drop-seal integrated in top and bottom of the door
- B** gaps around the door closed with rubber profiles in door frame
- C** sound absorbing labyrinth inside the floor plinths and between ceiling and roof panels
- D** double layered 10,7mm thick glass panels with acoustic layer in between
- E** 110mm thick sound absorbing panels at both sides and at ceiling
- F** 50-shore rubber soft band underneath the floorplinth for different floor surfaces



ACOUSTICS

Speech level insertion loss $D_{s,A}$ is 30 dB (measured according to ISO 23351-1), Class category A for the Work Pod (which is of identical build with different geometries). Test report available upon request.

COLLECTION PODS



PHONE POD



FLEX POD



DUO POD



WORK POD



WORK POD LARGE



WORK POD XL



MEETING POD



MEETING POD LARGE



MEETING POD XL