

work pod xxl

PRODUCT SPECIFICATION SHEET

This document contains technical information about the WORK POD XXL



MODULAR DESIGN MADE WITH SUSTAINABLE MATERIALS, MANUFACTURED LOCALLY FOR A CIRCULAR ECONOMY

In today's interconnected world, where the boundaries between our personal and professional lives are seamlessly merging and constant internet connectivity drives perpetual communication, maintaining privacy and tranquillity has become a crucial aspect of our daily routine an imperative design consideration in today's open and collaborative working and learning environments. The demand for a peaceful enclave is undeniable.

The WORK POD XXL provides a noise-reducing sanctuary that not only caters to our internal need for retreat but also provides a small private space for phone & video calls or individual work and learning tasks in an open and collaborative working and learning environment.

The WORK POD XXL offers various integration options for its side panels, including an integrated Side table that can be elevated, combined with a stool or a (task)chair, but is also big enough for a standard size sit-to-stand desk. The interior dimensions of the WORK POD XXL offer enough space for a person with a wheel chair working at a desk of 160cm x 80cm. The width of the door of more than 90cm and the fact that there is no raised floor inside the pod, makes the WORK POD XXL matching the European standards for ergonomics.

This WORK POD XXL effortlessly fits into any existing or new space and comes fully equipped with a motion sensor-driven fresh air ventilation system, an automated LED lighting system, a primary power connection (230V), and multiple integrated multifunctional power sockets. (Includes 1 wooden crate, 2 ventilators, accommodates 1 or 2 persons, option for a high seat available).

Design by Ecolution

CONTENT

Technical data	page 3
Dimensions	page 4
Ventilation	page 5
Electricity & cable management	page 5
Interior & exterior furniture options	page 6
Fabrics & finishes	page 7-8
Acoustic performance data	page 9
Modular range	page 10

CERTIFICATIONS



TECHNICAL DATE

WORK POD XXL



Users

1 or 2 persons (1 wheel chair)



Weight

780 kg | 1720 lbs



Installation

6 hours, including unboxing at spot
Two installers required
Cordless screwdriver and leveler required



Outside dimensions

Depth: 1774 mm
Height: 2333 mm
With: 2700 mm



Power:

Mains supply: 230V AC 50-60Hz, max 16A
Cable connection: GST18
Stand-by consumption: 2,1 W
Consumption LED lights (2x) in total: 10 W
Consumption ventilator (2x) in total: 11,52 W
Infrared motion sensor time delay: 10 sec-7 min.



Lighting unit:

Power usage in total: 2x 5 W = 10 W
Input: 230V AC 50-60 Hz
Lumen output in total: 900 lumen
Color Temperature: 2700 K
Lifespan: +/- 15.000 hours
Fitting: GU10



Ventilation unit:

Power usage: 5,76W (2x)
Input: 12V DC
Airflow rate when occupied: 89 m3/h
Ventilators switched of automatically after
7 minutes without occupancy
DB per ventilator during occupancy: 5 dB(A)



Packaging

Knockdown wooden crate
Dimensions 2390mm / 800mm / 1750mm
Material planed Pine wood & MDF board
Required amount of boxes = 1
Credit for each box when returned
Optional sofa's and table tops packed separately



Interior & exterior options

Exterior: shelf (possible in high and low position), LCD-screen panel, magnetic whiteboard
Interior: side table, shelf, LCD-screen panel, magnetic whiteboard, sofa's.



Fabrics and finishes

Interior: upholstered eco-fabric-, eco-felt- or laminated acoustic wood panels
Exterior: upholstered eco-fabric-, eco-felt- or laminated panels

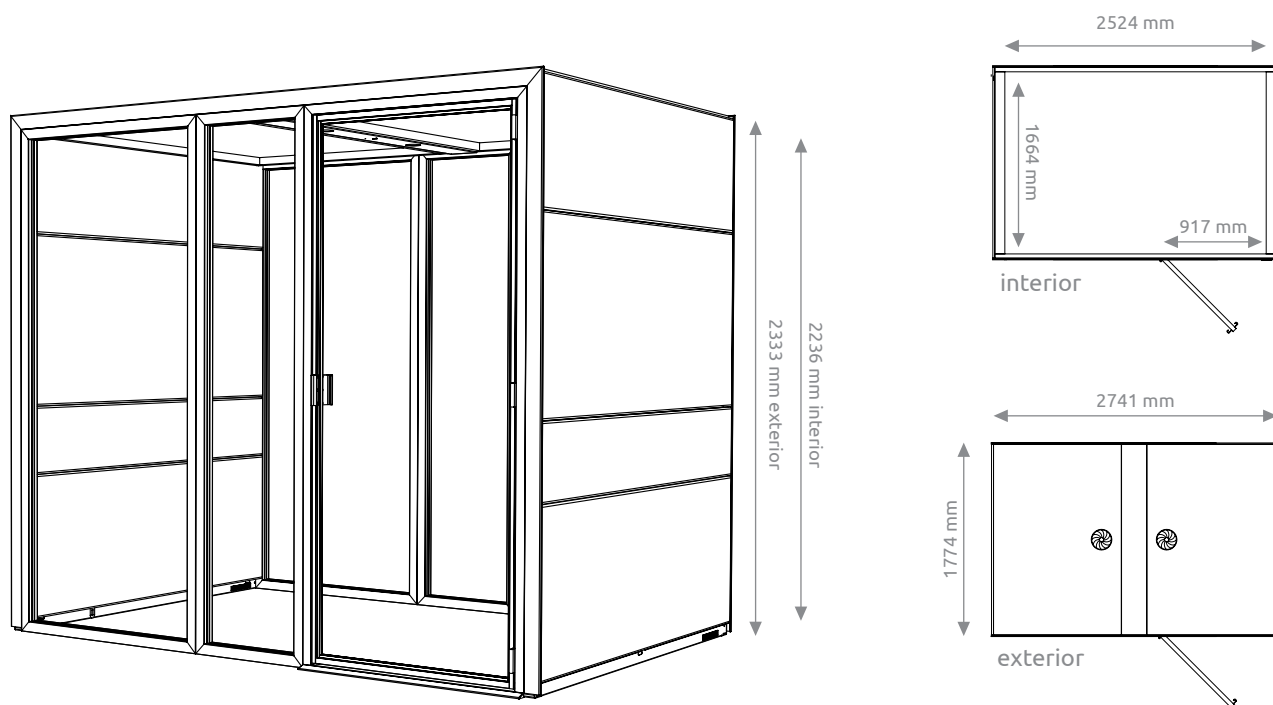


Materials

Panels made of 100% recycled wood and panels made of recycled paper and organic waste
Frame made of powder coated RAL9005 aluminum extrusion profiles and sheet metal
Acoustic filling made of 100% recycled jeans
Safety glass panels 5 mm + 5 mm / 0.2 in + 0.2 in
Insulation material made of 100% recycled textile
Upholstery made of 50% - 100% recycled textile
EPDM rubber u-profile for windows and door
EPDM rubber soundblock profile for door frame

DIMENSIONS

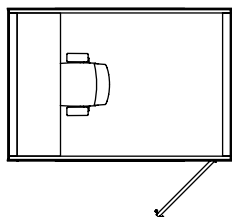
WORK POD XXL



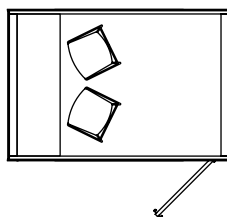
INTERIOR OPTIONS



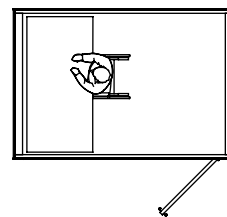
WORK POD XXL with integrated side table in low (750 mm) position. Side table 500mm x 1010mm



WORK POD XXL with integrated shelf in high (1050 mm) position. Shelf 250mm x 1010mm



WORK POD XXL with desk. Desk 800mm x 1600mm



VENTILATION



ventilation slots



ventilators

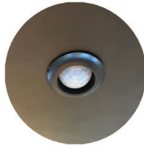
Input fresh air: Perforated floor plinths with internal acoustic labyrinth.
Output air: 2x ventilators integrated in roof.

Airflow rate when occupied: 89 m³/h

LIGHTING



LED-Light



sensor

Directional LED-lights integrated in ceiling: 2x 5 W = 10 W
Lumen output in total: 900 lumen
Color Temperature: 2700 K
Activation: By infrared motion detection integrated in ceiling
Lifespan LED bulbs: +/- 15.000 hours
Fitting: GU10

POWER CONNECTION

The pods can be connected to the network of building from each side of the pod 5cm above the floor or from the roof if preferable. Pods with a mid-panel integrated at the back have an extra option using a 60mm diameter grommet placed 3cm above the floor in the middle. Because the panels at the outside and inside of the pod can be removed, a cable channel inside the wall is accessible and cables can be guided in any direction.

All pods will be delivered with a GST18 power block with four gangs and two five meter GST18 cables to connect the pod with power sockets to the building.



power cables
with GST18 plug



cable splitter
for connecting



GST18 power block
integrated in ceiling tray

INTEGRATED POWERSOCKET OPTIONS



POWER SOCKET STANDARD

- 230 volt RA
- including 200mm cable GST18
- 68mm diameter



UTP Cat6 2x

- Two UTP ports included
- No cables included for ports at the backside
- 68mm diameter



USB SPEED CHARGING

- 2x USB port include
- including 200mm cable GST18
- 68mm diameter



Cat6 UTP + 1x HDMI

- 1x UTP Cat6 port included
- 1x HDMI port included
- 68mm diameter

OPTIONAL

SOFA



Sofa with removable covers
1650mm x 665mm x 824mm
Seating height 460mm

Available in different eco-fabrics.

SIDE TABLE



Side table in the wall at the left- or right side of the pod.
In high position (1050mm) from floor or low position (750 mm).
Dimensions 500mm x 1664mm

Available in different colours.

LCD-SCREEN PANEL



LCD-screen panel, available for inside or integrated at the outside of the pods.
Dimensions 1780mm x 780mm

Available in different colours.

MAGNETIC WHITE BOARD



Magnetic whiteboard available for inside or integrated at the outside of the pods.
Dimensions 1780mm x 780mm

SHELF



Shelf integrated in the wall at the left- or right side of the pod.
In high position (1050mm) from floor or low position (750 mm).
Dimensions 250mm x 1664mm

Available in different colours.



FABRICS

ECO-FABRIC SOTO



42% LESS ENERGY



52% LESS WATER



46% LESS CO2



60% WASTE MATERIAL

Price category 1, in various colors
Composition: 100% recycled PET (plastic bottles waste)
Weight: 600 g/m2 | 17.64 oz/yd2
Abrasion resistance: 100.000 Martindale
Flammability: EN 1021 1-2

ECO-FABRIC REBO



59% LESS ENERGY



74% LESS WATER



35% LESS CO2



96% WASTE MATERIAL

Price category 1, in various colors
Composition: 96% recycled PET, 4% NY
Weight: 590 g/m2 | 17.36 oz/yd2
Abrasion resistance: 90.000 Martindale
Flammability: BS 5852

ECO-FABRIC WOOLY



82% LESS ENERGY



31% LESS WATER



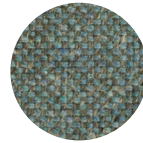
92% LESS CO2



70% WASTE MATERIAL

Price category 2, in various colors
Composition: 70% Wool recycled / 25% PA recycled / 5% OF
Weight: 600 g/m2 | 17.64 oz/yd2
Abrasion resistance: 100.000 Martindale
Flammability: EN 1021 1-2

ECO-FABRIC ORGANI



64% LESS ENERGY



22% LESS WATER



89% LESS CO2



50% WASTE MATERIAL

Price category 2, in various colors
Composition: 50% Wool recycled / 20% PA recycled / 30% LI
Weight: 550 g/m2 | 16.23 oz/yd2
Abrasion resistance: 100.000 Martindale
Flammability: BS 5852-part 1 / EN 1021 1-2

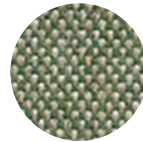
ECO-FABRIC BLAZER



100% BIO DEGRADABLE

Price category 4, in various colors
Composition: 100% Virgin Wool
Weight: 460 g/m2 | 13.55 oz/yd2
Abrasion resistance: 50.000 Martindale
Flammability: EN 1021 1-2

ECO-FABRIC MAIN LINE FLAX



100% BIO DEGRADABLE

Price category 3, in various colors
Composition: 70% Virgin Wool, 30% flax
Weight: 437 g/m2 | 12.88 oz/yd2
Abrasion resistance: 50.000 Martindale
Flammability: EN 1021 1-2

ECO-FELT



14% LESS ENERGY



98% LESS WATER



89% LESS CO2



98% WASTE MATERIAL

Price category 2, in various colors
Composition: 100% recycled textile from different origin.
Weight: 450 g/m2 | 13.29 oz/yd2
Abrasion resistance: the felt is not suitable for upholstery of seats
Flammability: EN 1101 1-2 standard.

FINISHES

LAMINATED PANELS OUTSIDE



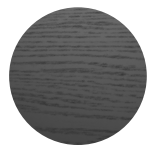
light oak



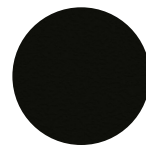
natural oak



fumed oak



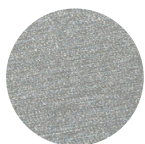
black oak



black mat



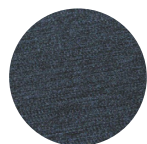
brushed gold



brushed aluminum



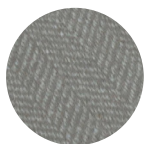
brushed bronze



brushed metal blue



moss grey



slate grey



wool beige



brown weave

LAMINATED WOODGRAIN ECO PANELS INSIDE



light oak



natural oak



fumed oak



black oak

TABLE & SHELF FINISHES RECYCLED



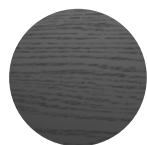
light oak



natural oak



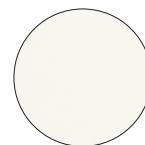
fumed oak



black oak



black mat

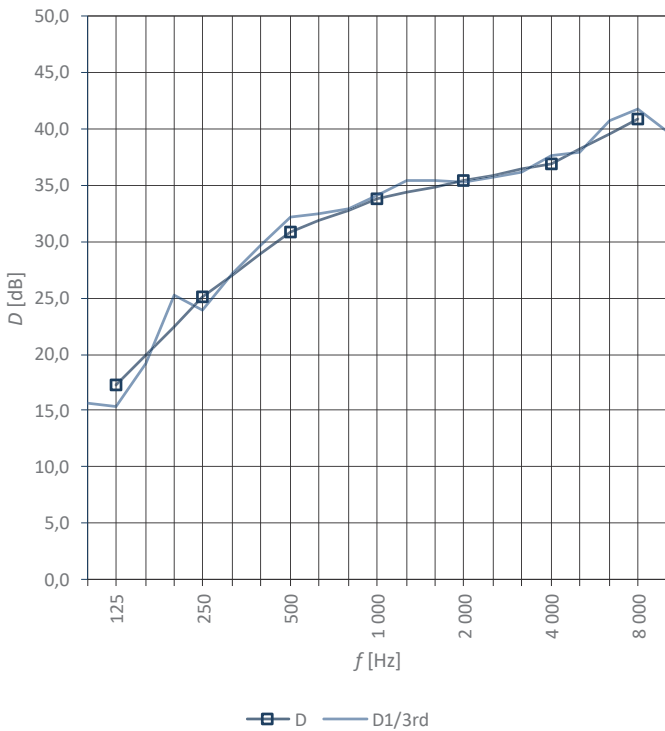


white

ACOUSTICS



- A** automatic drop-seal integrated in top and bottom of the door
- B** gaps around the door closed with rubber profiles in door frame
- C** sound absorbing labyrinth inside the floor plinths and between ceiling and roof panels
- D** double layered 10,7mm thick glass panels with acoustic layer in between
- E** 110mm thick sound absorbing panels at both sides and at ceiling
- F** 50-shore rubber soft band underneath the floorplinths for different floor surfaces



ACOUSTICS

Speech level insertion loss $D_{s,A}$ is 30 dB (measured according to ISO 23351-1), Class category A for the Work Pod (which is of identical build with different geometries). Test report available upon request.

COLLECTION PODS



PHONE POD



FLEX POD



DUO POD



WORK POD



WORK POD LARGE



WORK POD XL



MEETING POD



MEETING POD LARGE



MEETING POD XL